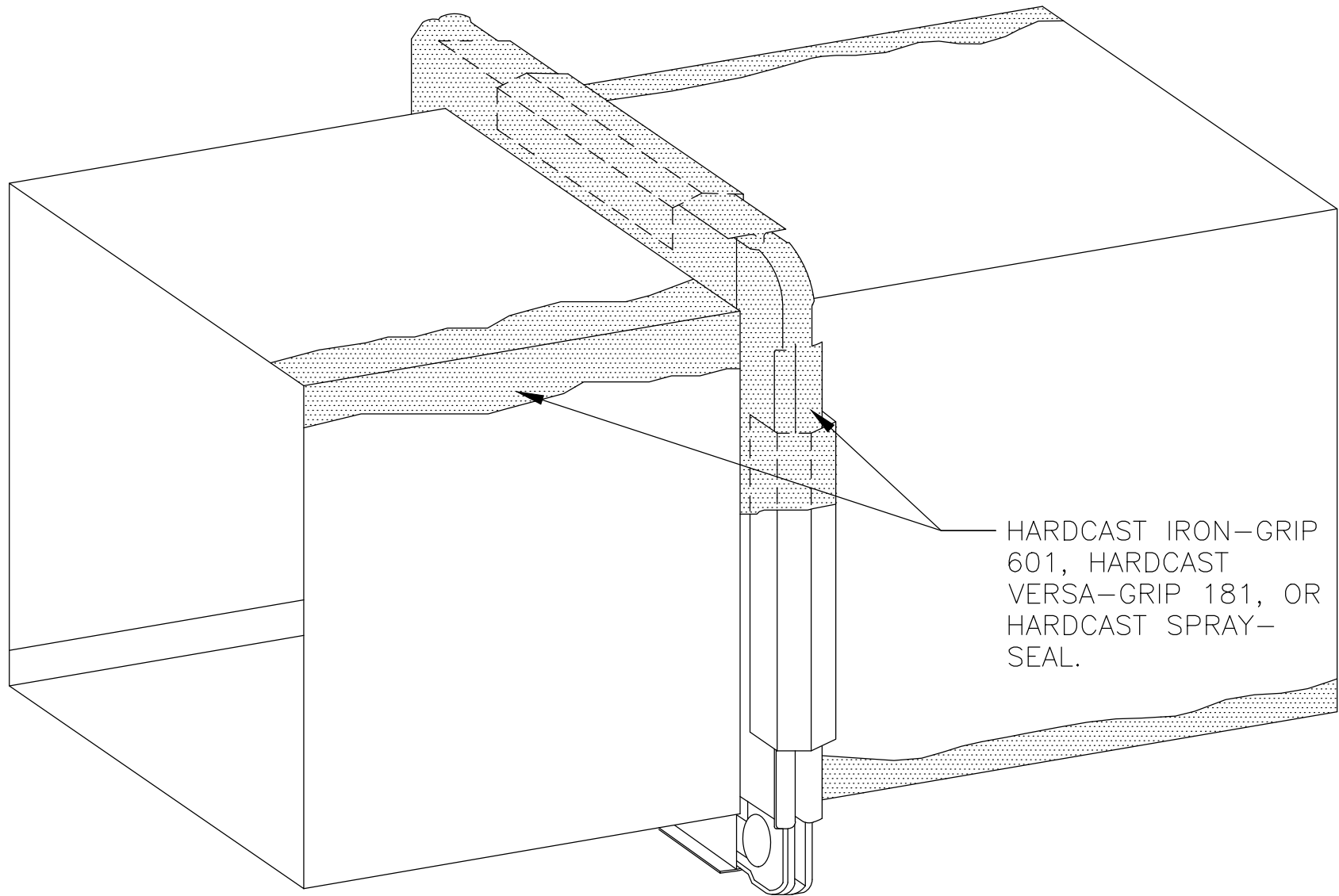


FSS-2A

TDC/TDF FLANGE

**CARLISLE**  
HVAC PRODUCTS

© 2017 CARLISLE CORPORATION



NOTES:

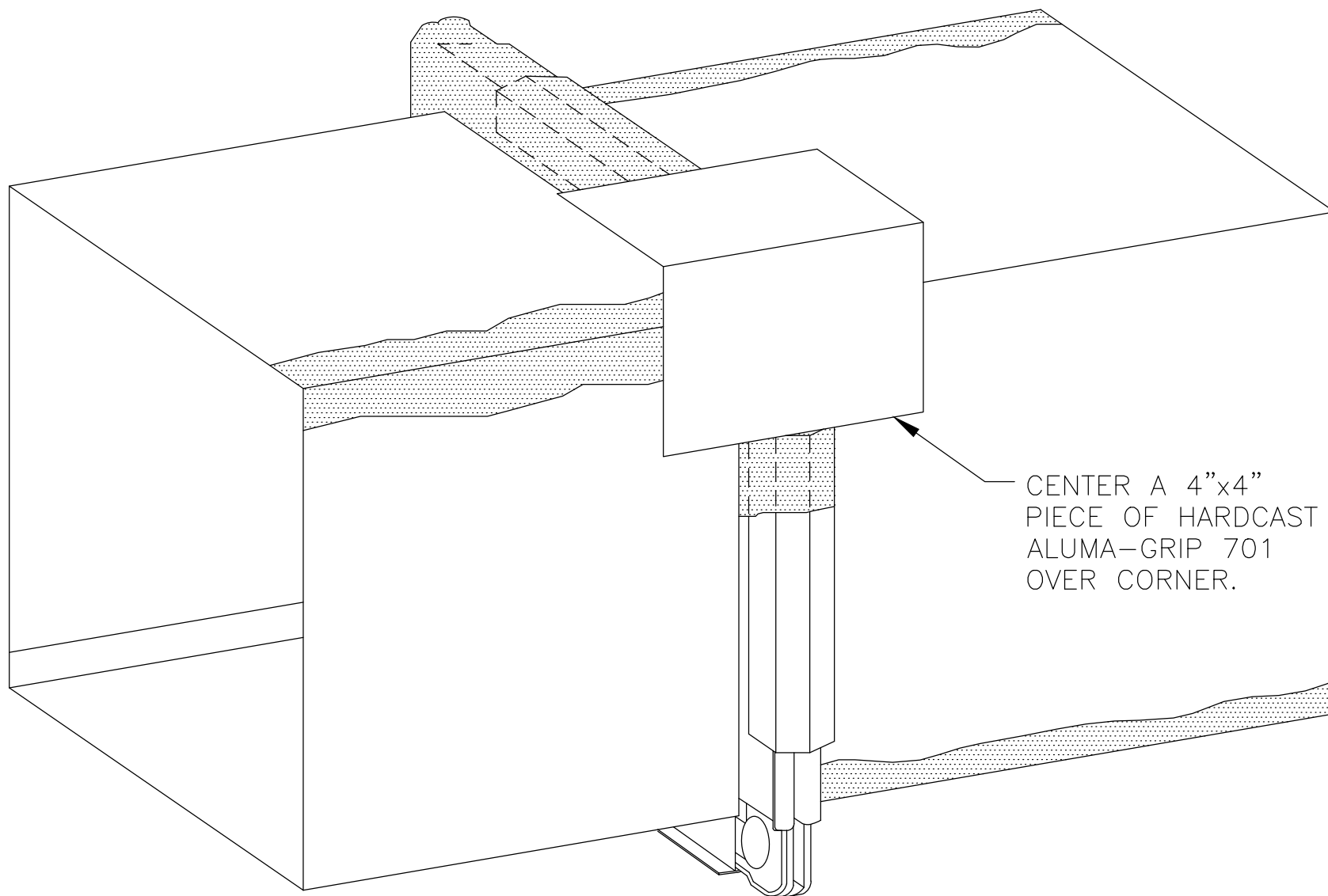
1. APPLY DUCT SEALANT PER MANUFACTURER'S TECHNICAL DATA SHEET.
2. DUCT SEALANT MUST DRY A MINIMUM OF 48 HOURS PRIOR TO PLACING ALUMA-GRIP 701.
3. DUCT SEAL ALL DUCT WALL PENETRATIONS.

FSS-2B

TDC/TDF FLANGE

**CARLISLE**  
HVAC PRODUCTS

© 2017 CARLISLE CORPORATION

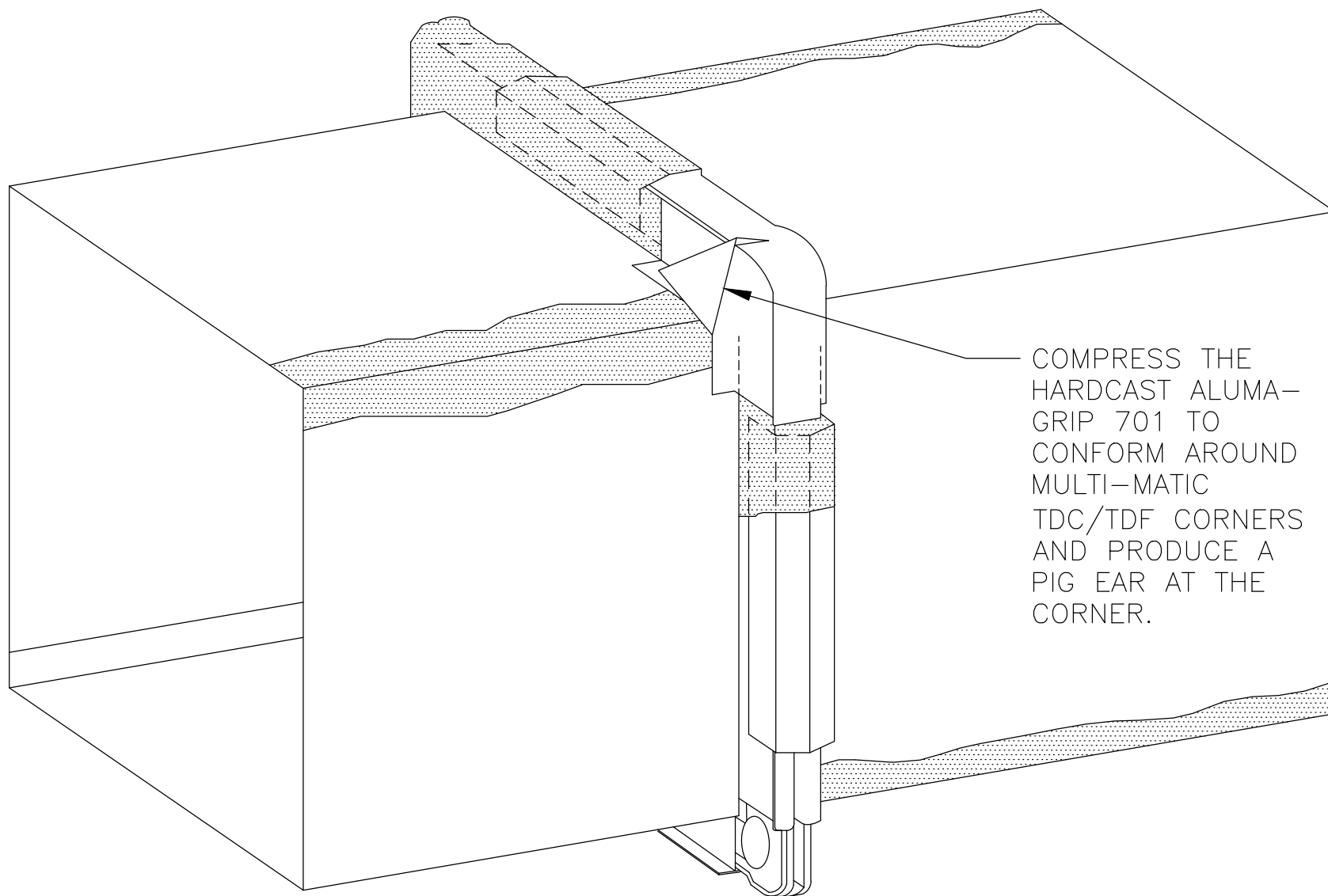


FSS-2C.1

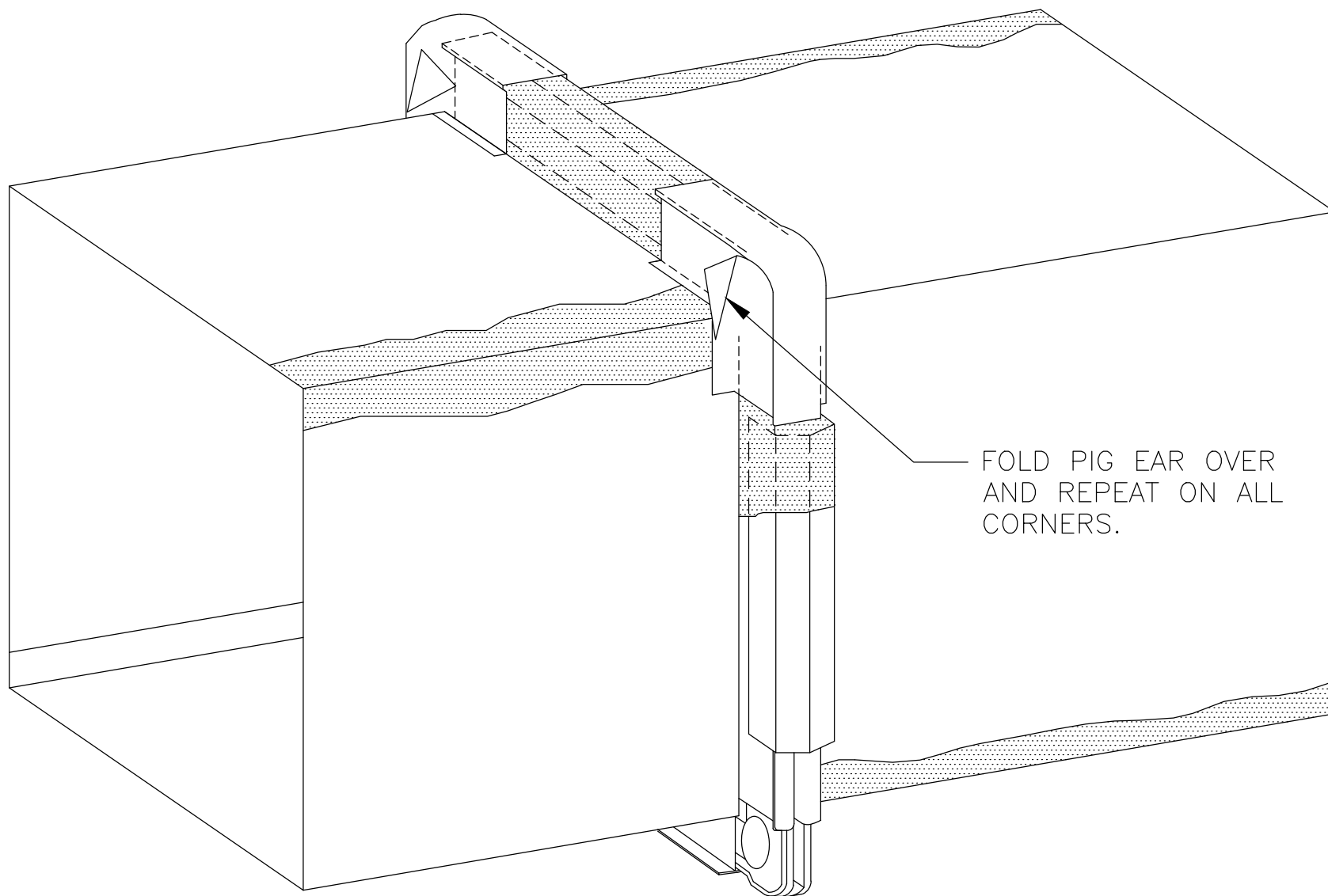
TDC/TDF FLANGE

**CARLISLE**  
HVAC PRODUCTS

© 2017 CARLISLE CORPORATION



COMPRESS THE  
HARDCAST ALUMA-  
GRIP 701 TO  
CONFORM AROUND  
MULTI-MATIC  
TDC/TDF CORNERS  
AND PRODUCE A  
PIG EAR AT THE  
CORNER.



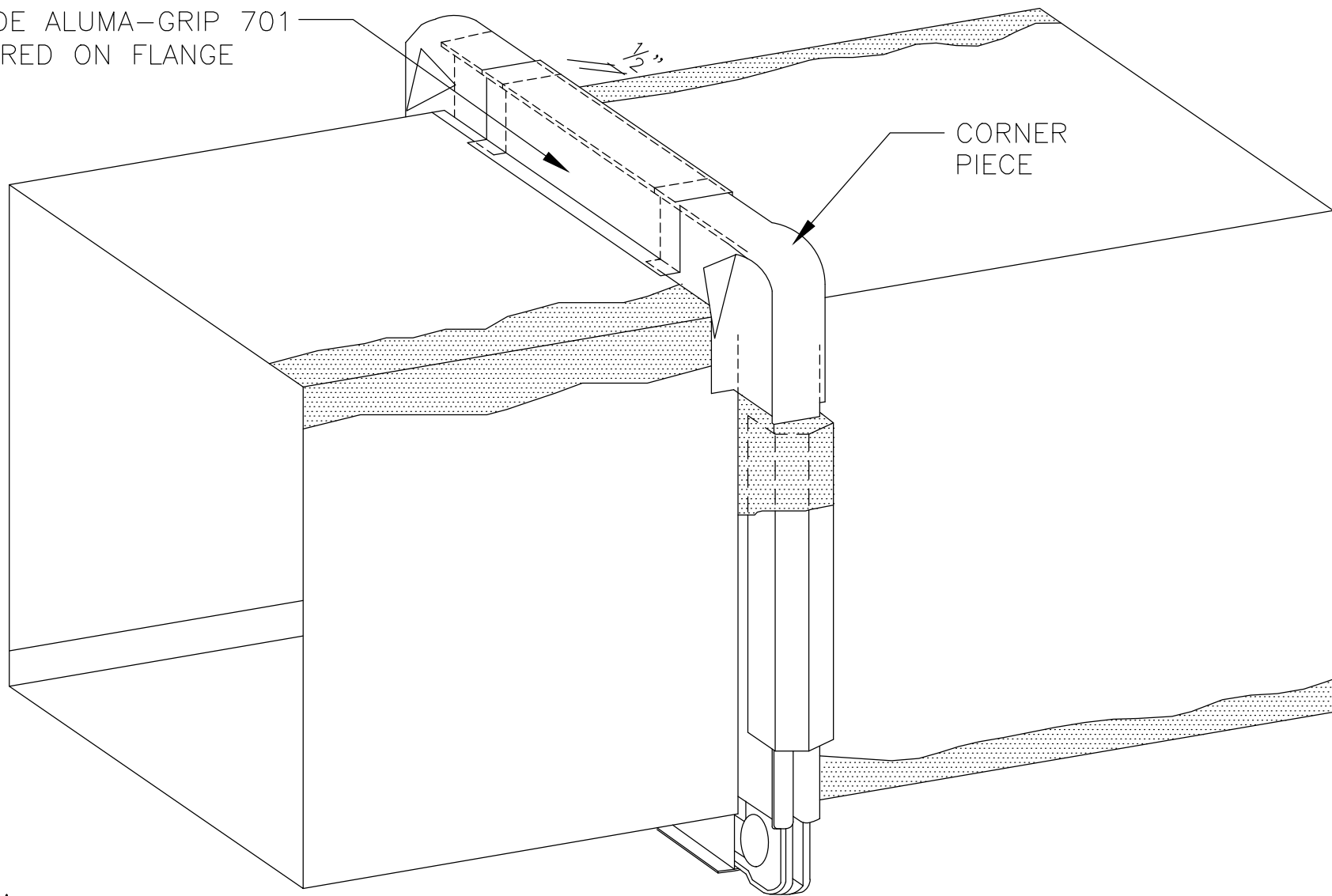
FSS-2C.3

TDC/TDF FLANGE

**CARLISLE**  
HVAC PRODUCTS

© 2017 CARLISLE CORPORATION

4" WIDE ALUMA-GRIP 701  
CENTERED ON FLANGE



NOTES:

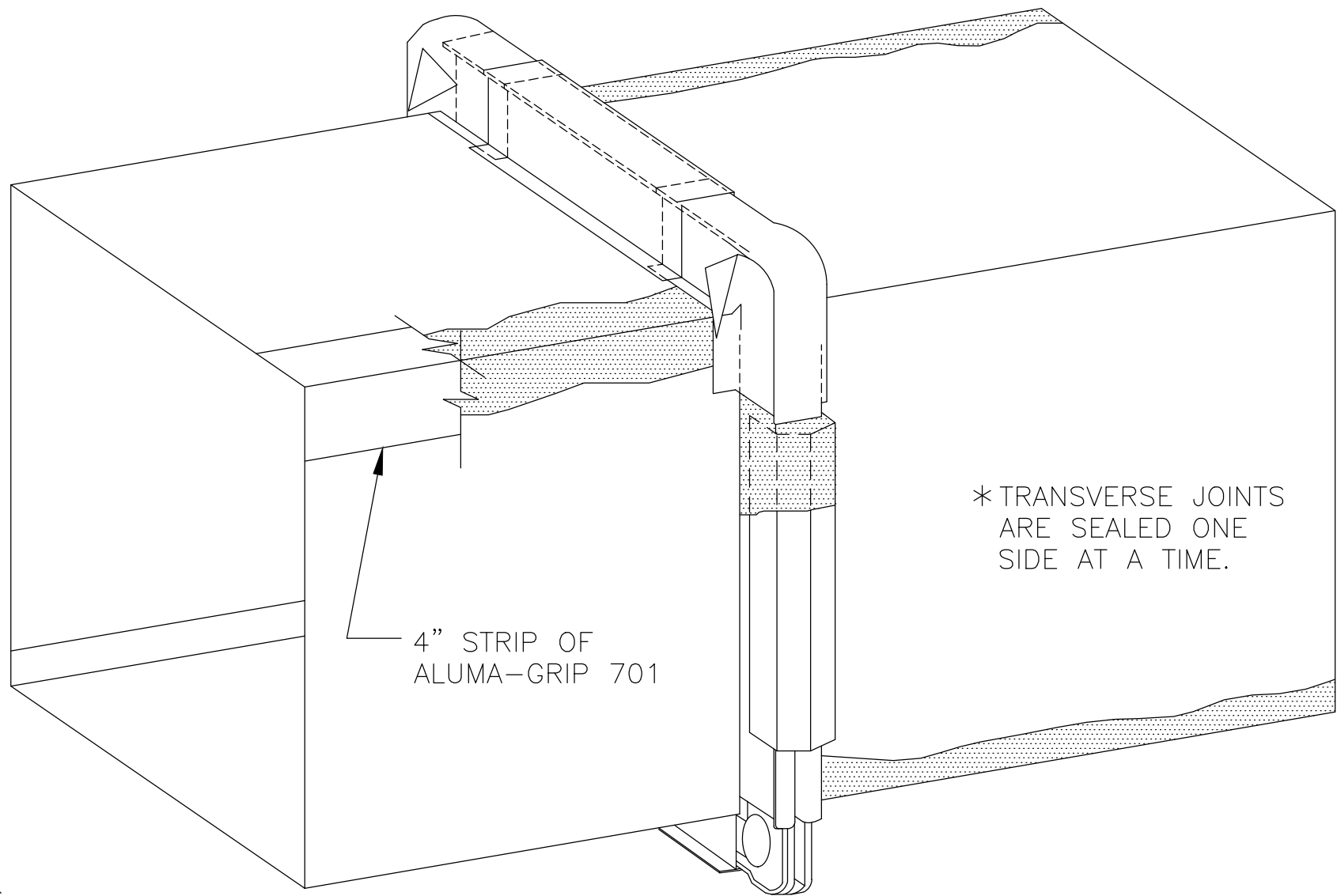
1. LONGITUDINAL SEAMS — CUT AND CENTER 4" WIDE COVER STRIP OF AFT-701 OVER THE DRIED DUCT. SQUEEGEE ALUMA-GRIP 701.
2. TRANSVERSE JOINTS — CUT AND CENTER 4" WIDE COVER STRIP OF AFT-701 OVER THE DRIED DUCT SEALANT. SQUEEGEE ALUMA-GRIP 701 TO ELIMINATE WRINKLES.
3. SPLICE AFT-701 INTO EACH SIDE A MINIMUM OF  $\frac{1}{2}$ ".

FSS-2C.4

TDC/TDF FLANGE

**CARLISLE**  
HVAC PRODUCTS

© 2017 CARLISLE CORPORATION



NOTES:

1. LONGITUDINAL SEAMS — CUT AND CENTER 4" WIDE COVER STRIP OF AFT-701 OVER THE DRIED DUCT. SQUEEGEE ALUMA-GRIP 701.
2. TRANSVERSE JOINTS — CUT AND CENTER 4" WIDE COVER STRIP OF AFT-701 OVER THE DRIED DUCT SEALANT. SQUEEGEE ALUMA-GRIP 701 TO ELIMINATE WRINKLES.
3. SPLICE AFT-701 INTO EACH SIDE A MINIMUM OF  $\frac{1}{2}$ ".

FSS-2C.5

TDC/TDF FLANGE

**CARLISLE**  
HVAC PRODUCTS

© 2017 CARLISLE CORPORATION