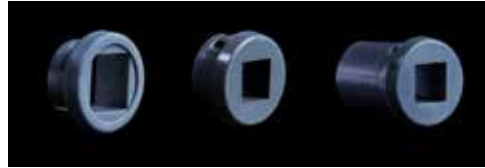


## OVERVIEW

Rossi was the first to introduce the Snap-In Bushings and changed the game in HVAC damper assembly. With this innovation Rossi eliminated install times as the bushings snap right into the duct wall for speedy assembly. These eliminate leakage and are rated for medium or low pressure systems. Our Clip-On Bushings add an additional locking clip for higher pressure systems.



## PART NUMBERS

| Part # | Product Description                                                 | Quantity | Rossi Part # |
|--------|---------------------------------------------------------------------|----------|--------------|
| 358698 | Snap-in bushing for 3/8" bar                                        | 500/Case | B-SNAP3/8    |
| 358699 | Longer snap-in bushing for 3/8" bar used w/ lined duct              | 300/Case | B-LONG       |
| 358700 | Snap-in bushing for 1/2" bar for use w/ larger & rectangular blades | 500/Case | B-SNAP1/2    |
| 358701 | Clip-on bushing for 3/8" bar (open ended, with e-clip + washer)     | 400/Case | B-300        |
| 358702 | Clip-on bushing for 3/8" bar (close ended, with e-clip + washer)    | 300/Case | B-330        |

## SPECIFICATION/STANDARDS COMPLIANCE

| Property                                                        | Method                                                                                        | Results                                                          |
|-----------------------------------------------------------------|-----------------------------------------------------------------------------------------------|------------------------------------------------------------------|
| SMACNA Standard                                                 | HVAC Duct Construction Standards                                                              | Meets or exceeds latest standard                                 |
| UL 1995 Standard Code for Heating & Cooling (CSA-C22.2 No. 238) | Flammability rating<br>Deflection temperature<br>Tensile strength at break<br>Tensile modulus | 5VA<br>450F @ 66 PSI, 380F @ 264 PSI<br>9,500 PSI<br>480,000 PSI |

## FEATURES AND BENEFITS

- 100% designed, engineered and manufactured in the U.S.A.
- Made of flame retardant engineering polymer with highest rating of 5VA
- Available for 3/8" or 1/2" square bar
- Snap into 3/4" hole in duct wall for instant near-zero air tight seal
- Outperforms all leakage standards and competitors
- 3/8" Snap-In Bushing offered in long length to protect 2 in. insulation
- Snap-In Bushings are rated for medium pressure systems
- Clip-On Bushings are rated for high pressure systems
- Sealing washer and clip guarantees bushing locked and sealed to duct
- Clip-On Bushings offered in both open and closed ends
- Closed end with washer Clip-On Bushing eliminates leakage



**CONTRACTORS  
GET REWARDED**

[CarlisleHVACRewards.com](http://CarlisleHVACRewards.com)

## TYPICAL PROPERTIES AND CHARACTERISTICS

|                           |                                                          |
|---------------------------|----------------------------------------------------------|
| Ductwork Requirement      | Spiral, square, rectangular                              |
| Material (Bushings)       | Flame retardent engineering polymer (PA66 or equivalent) |
| Material (Sealing Washer) | Vulcanized fiber (ASTM D710)                             |
| Material (Clip)           | Carbon steel, black phosphate                            |
| Environmental Safety      | Non-toxic when used as intended                          |
| Packaging                 | Cardboard carton                                         |

## APPLICATION

|          |                                                                                                                |
|----------|----------------------------------------------------------------------------------------------------------------|
| Painting | If ductwork is to be painted/coated, avoid painting/coating Rossi components to protect the damper's function. |
|----------|----------------------------------------------------------------------------------------------------------------|

## PRECAUTIONS

Rossi Bushings have potential pinch points therefore care should be taken when handling and use standard personal protective equipment when handling/installing.

## STORAGE

|              |               |
|--------------|---------------|
| Shelf Life   | Indefinite    |
| Flammability | Non-flammable |

## LEED®

|                                  |              |
|----------------------------------|--------------|
| Post-Industrial Recycled Content | 0%           |
| Pre-consumer Recycled Content    | 0%           |
| VOC Content                      | 0 g/l        |
| Manufacturing Location(s)        | Montrose, CA |



[www.carlislehvac.com](http://www.carlislehvac.com)



**USA:** 900 Hensley Lane, Wylie, TX 75098 • (877) 495-4822  
97 Dexter Road, East Providence, RI 02914 • (401) 216-7900  
**Canada:** 2055 Boulevard Hymus, Dorval, QC H9P 1J8 • (800) 544-5535