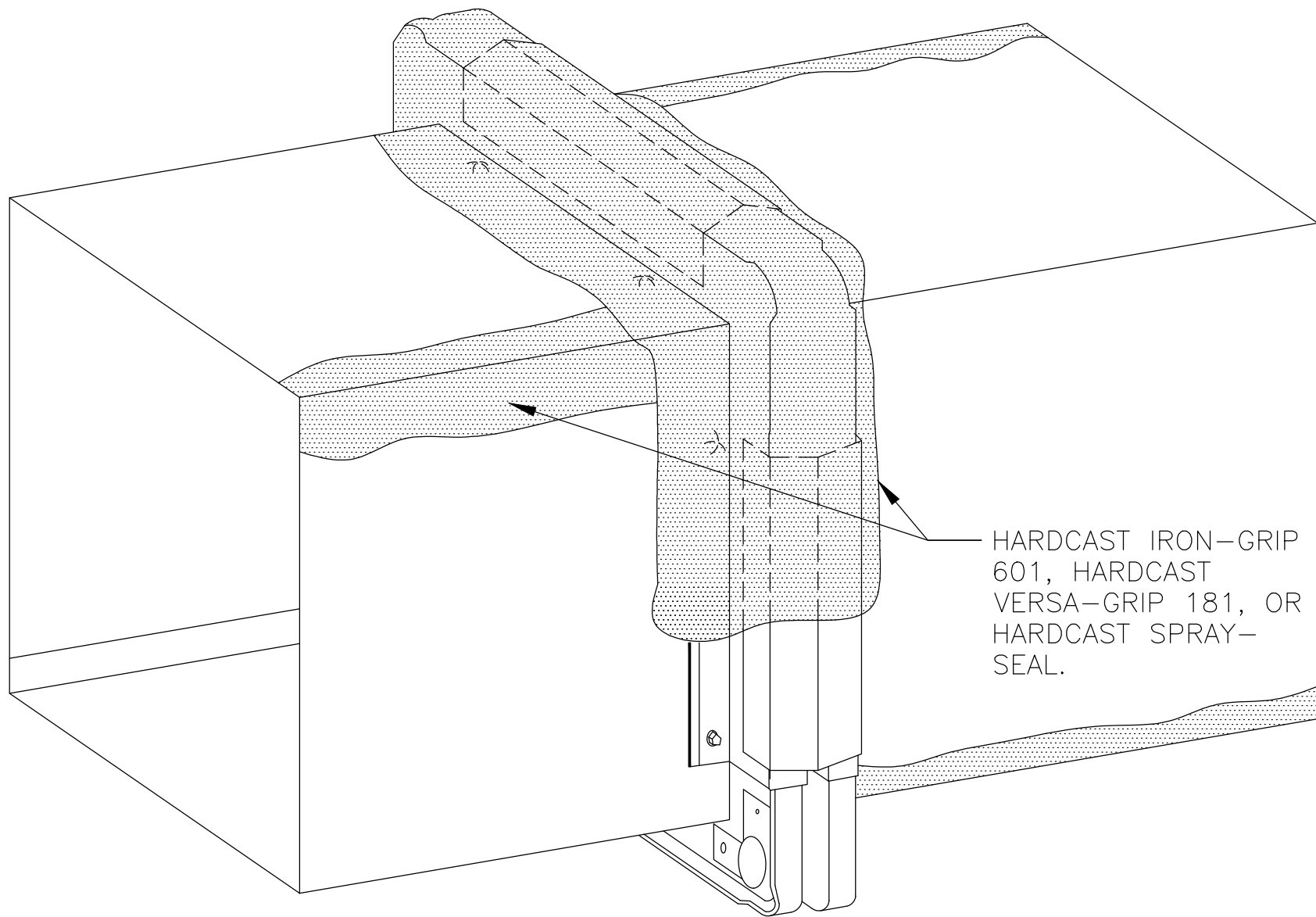


FSS-1A

4-BOLT FLANGE

CARLISLE
HVAC PRODUCTS

© 2013 CARLISLE CORPORATION



HARDCAST IRON-GRIP
601, HARDCAST
VERSA-GRIP 181, OR
HARDCAST SPRAY-
SEAL.

NOTES:

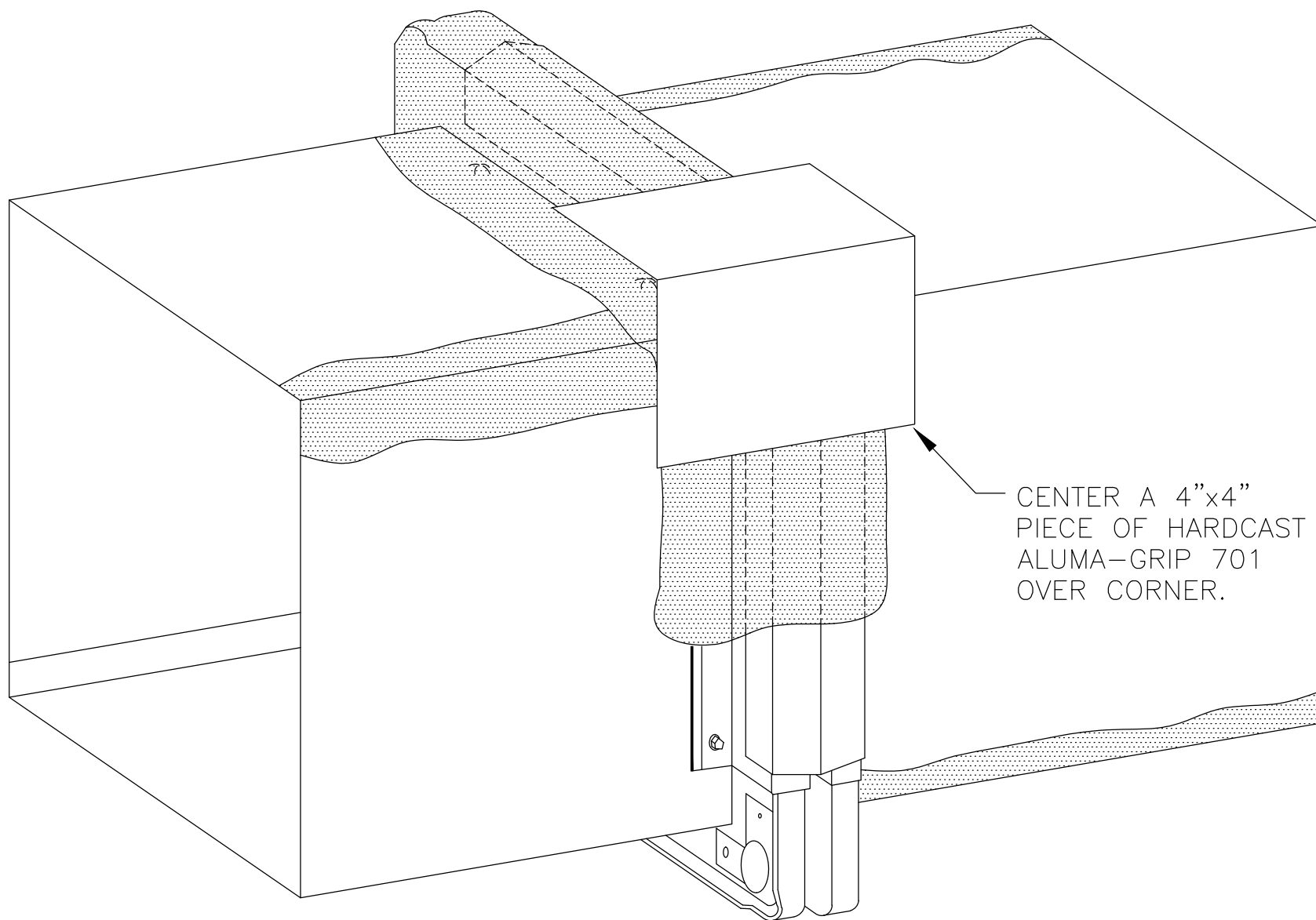
1. APPLY DUCT SEALANT PER MANUFACTURER'S TECHNICAL DATA SHEET.
2. DUCT SEALANT MUST DRY A MINIMUM OF 48 HOURS PRIOR TO PLACING ALUMA-GRIP 701.
3. DUCT SEAL ALL DUCT WALL PENETRATIONS.

FSS-1B

4-BOLT FLANGE

CARLISLE
HVAC PRODUCTS

© 2013 CARLISLE CORPORATION

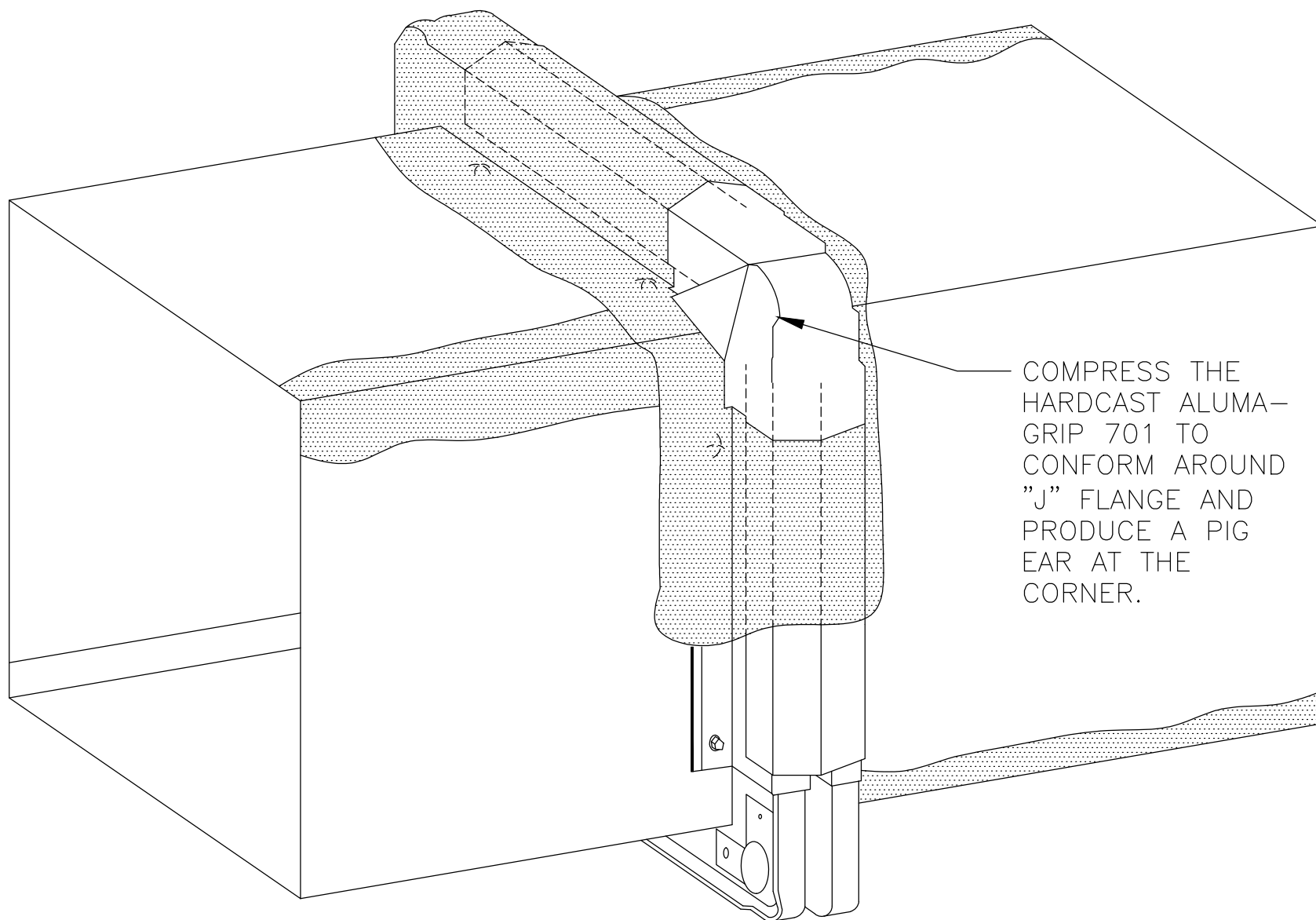


FSS-1C.1

4-BOLT FLANGE

CARLISLE
HVAC PRODUCTS

© 2013 CARLISLE CORPORATION

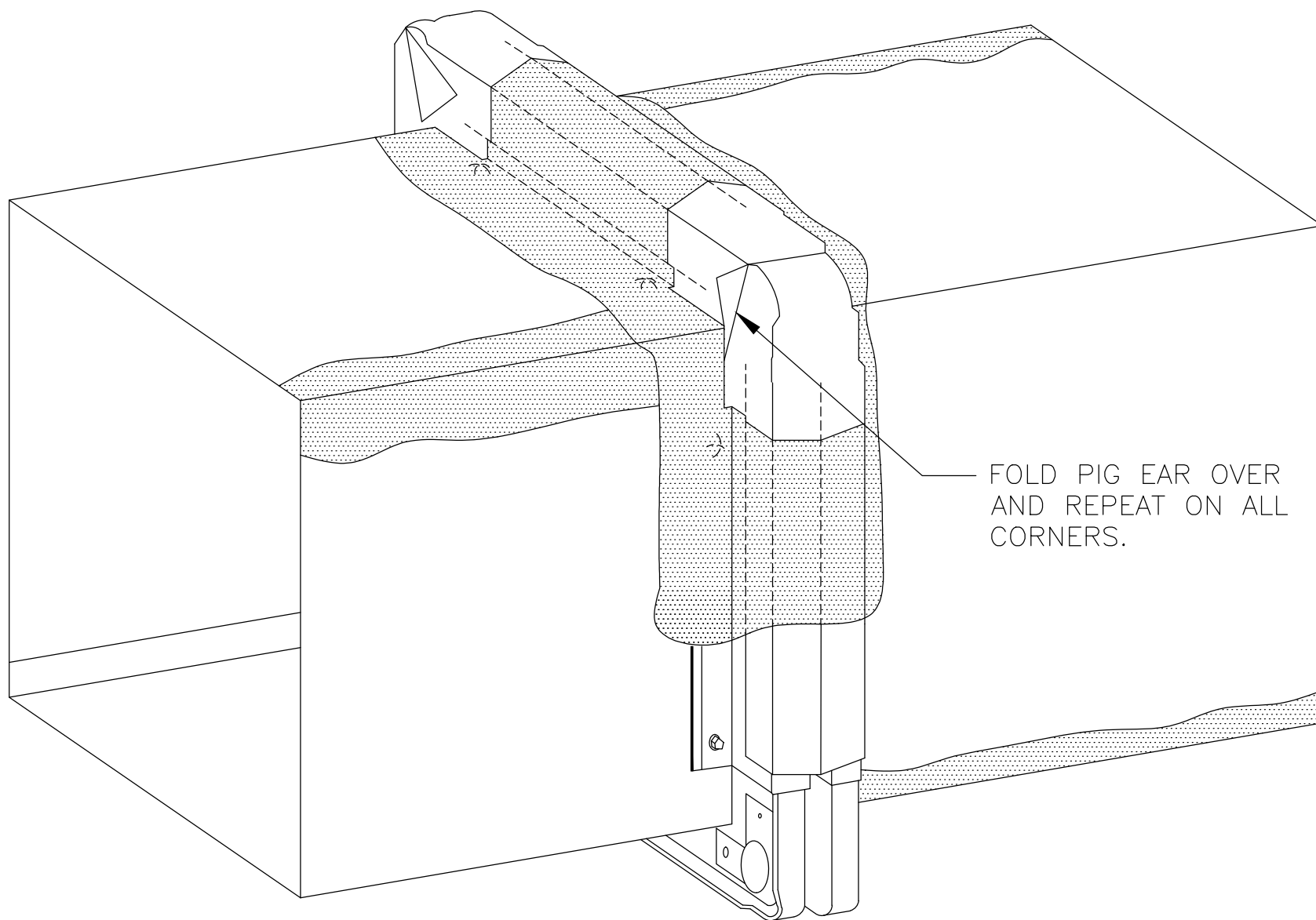


FSS-1C.2

4-BOLT FLANGE

CARLISLE
HVAC PRODUCTS

© 2013 CARLISLE CORPORATION



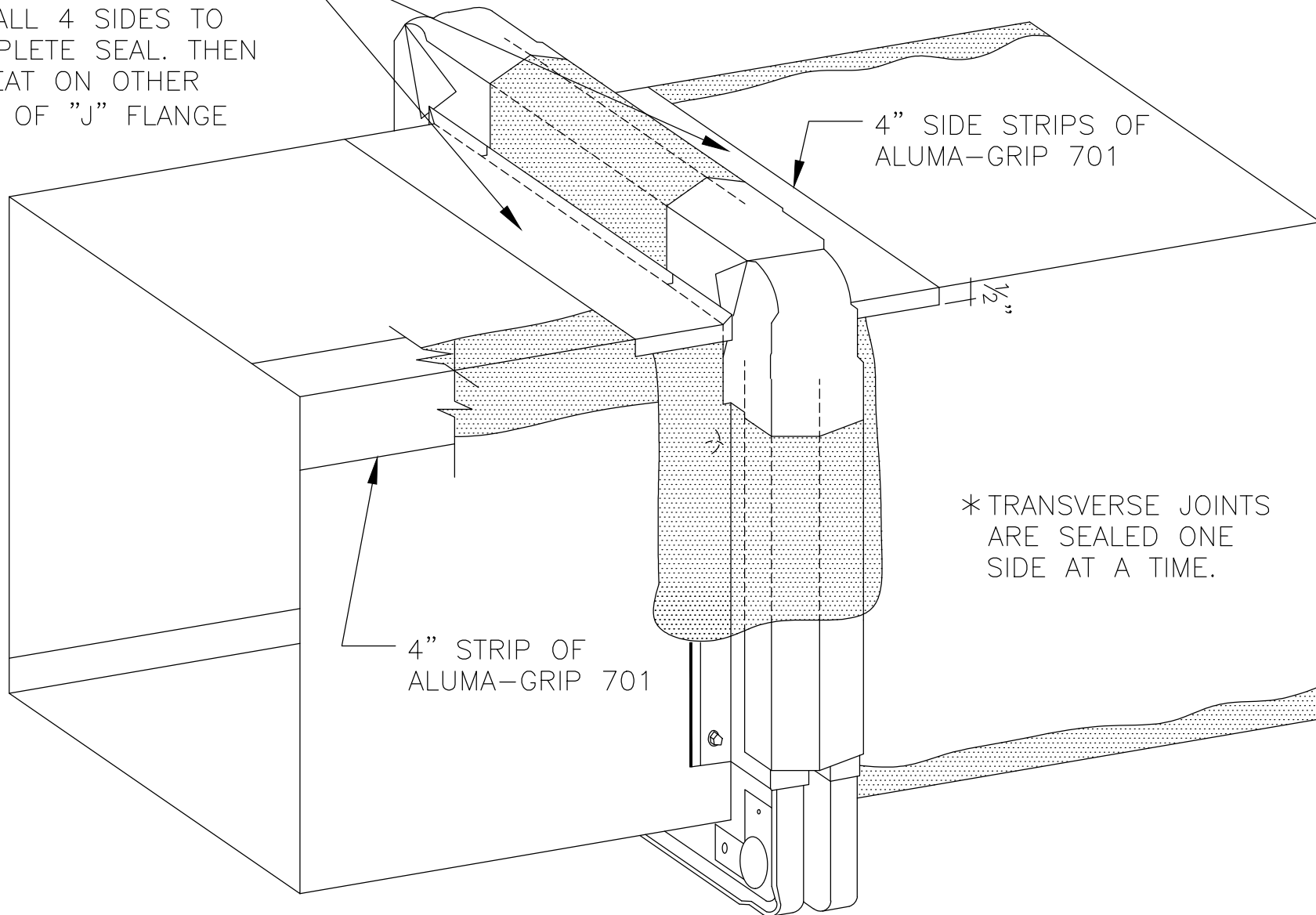
FSS-1C.3

4-BOLT FLANGE

CARLISLE
HVAC PRODUCTS

© 2013 CARLISLE CORPORATION

PLACE 4" STRIPS
OF ALUMA-GRIP 701
ON ALL 4 SIDES TO
COMPLETE SEAL. THEN
REPEAT ON OTHER
SIDE OF "J" FLANGE



* TRANSVERSE JOINTS
ARE SEALED ONE
SIDE AT A TIME.

NOTES:

1. CUT ADJACENT STRIPS OF AFT-701 AND SPLICE A MINIMUM OF $\frac{1}{2}$ " ONTO THE AFT-701 COVER STRIPS.
2. USE THE SQUEEGEE TO ELIMINATE WRINKLES AND SEAL THE AFT-701 TO THE DUCTWORK.
3. COMPLETE USING 2 SEPARATE PIECES OF AFT-701 FOR EACH SIDE.

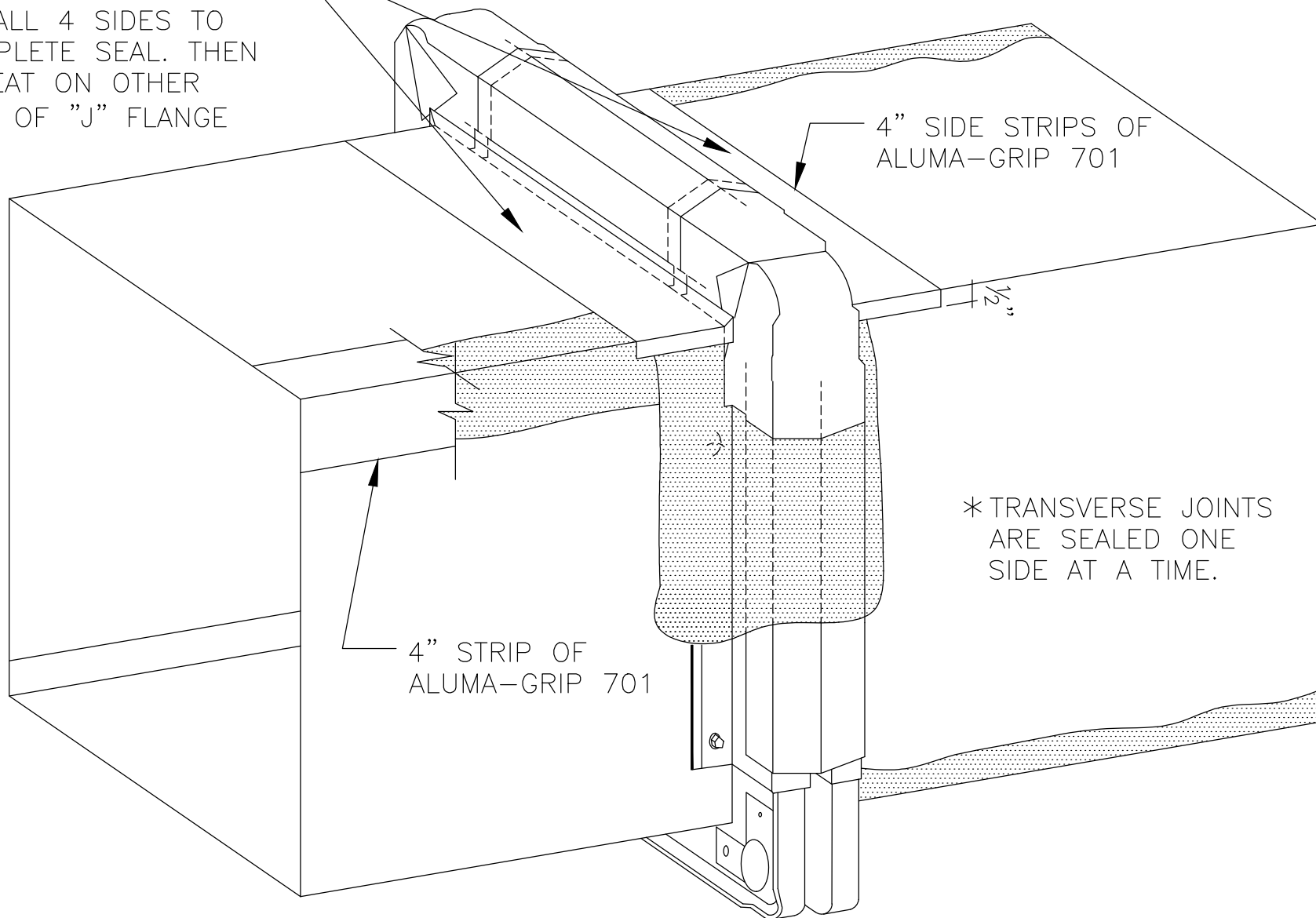
FSS-1C.4

4-BOLT FLANGE

CARLISLE
HVAC PRODUCTS

© 2013 CARLISLE CORPORATION

PLACE 4" STRIPS
OF ALUMA-GRIP 701
ON ALL 4 SIDES TO
COMPLETE SEAL. THEN
REPEAT ON OTHER
SIDE OF "J" FLANGE



NOTES:

1. CUT ADJACENT STRIPS OF AFT-701 AND SPLICE A MINIMUM OF $\frac{1}{2}$ " ONTO THE AFT-701 COVER STRIPS.
2. USE THE SQUEEGEE TO ELIMINATE WRINKLES AND SEAL THE AFT-701 TO THE DUCTWORK.
3. COMPLETE USING 2 SEPERATE PIECES OF AFT-701 FOR EACH SIDE.

FSS-1C.5

4-BOLT FLANGE

CARLISLE
HVAC PRODUCTS

© 2013 CARLISLE CORPORATION