

NOTE:

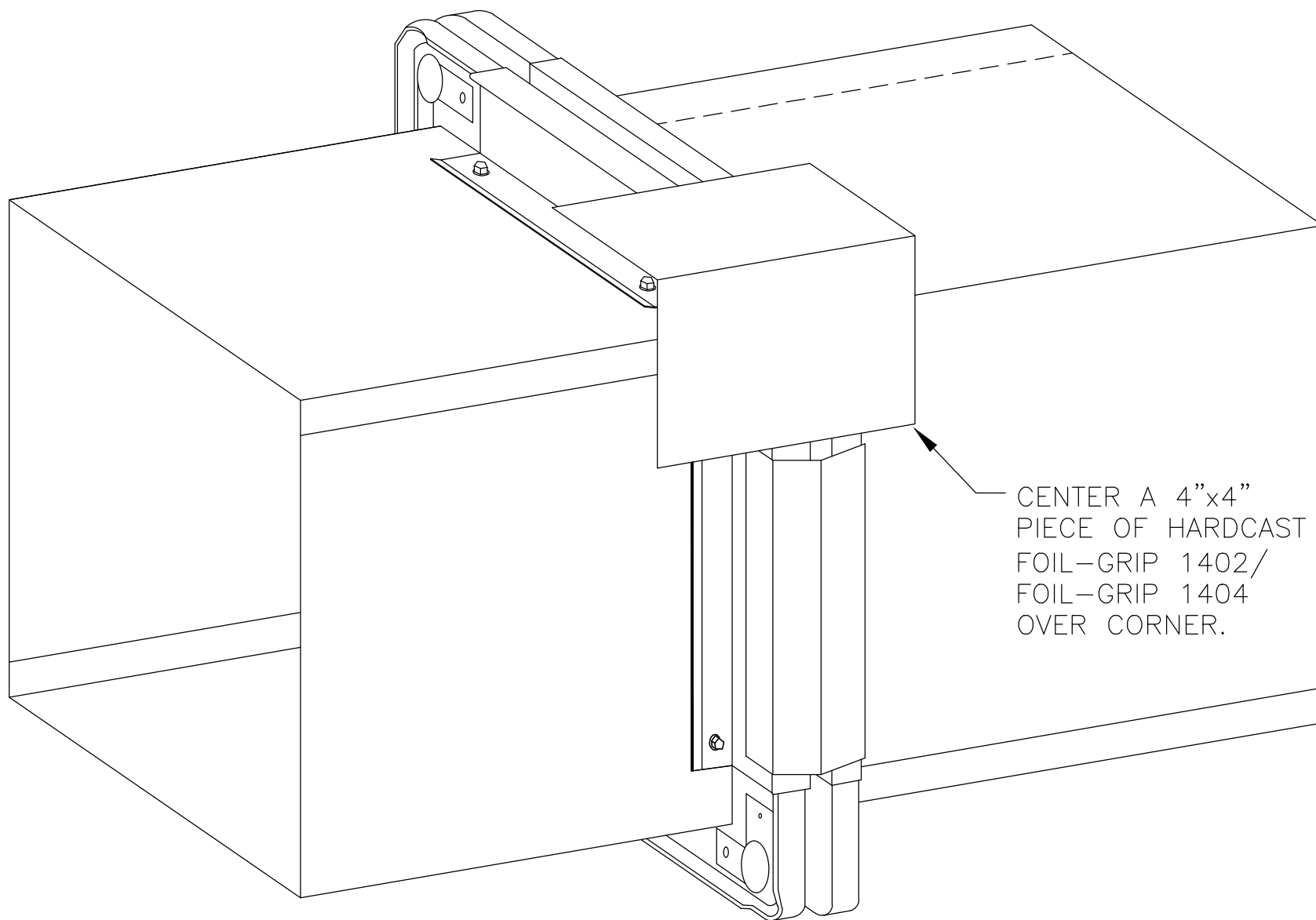
ON EXISTING DUCTWORK IT IS SUGGESTED TO TEST THE ADHESION OF THE ROLLED SEALANT PRIOR TO PERFORMING THE SEALING WORK. FOR OLDER DUCTWORK THE INSTALLER CAN USE AN ADHESIVE TO PRIME THE SURFACE FOR ROLLED SEALANT APPLICATION.

FO-1A

4-BOLT FLANGE

CARLISLE
HVAC PRODUCTS

© 2014 CARLISLE CORPORATION

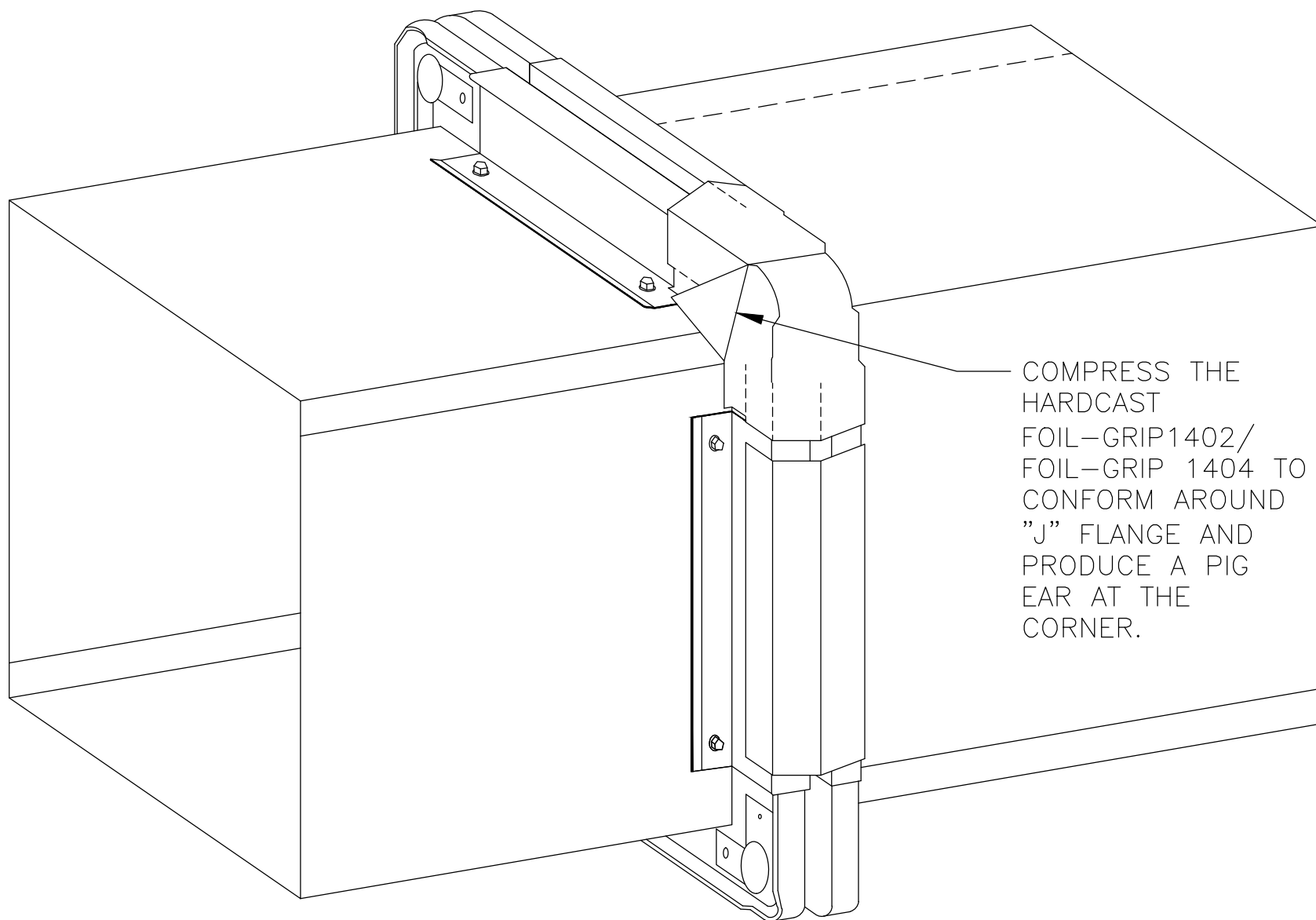


FO-1C.1

4-BOLT FLANGE

CARLISLE
HVAC PRODUCTS

© 2014 CARLISLE CORPORATION

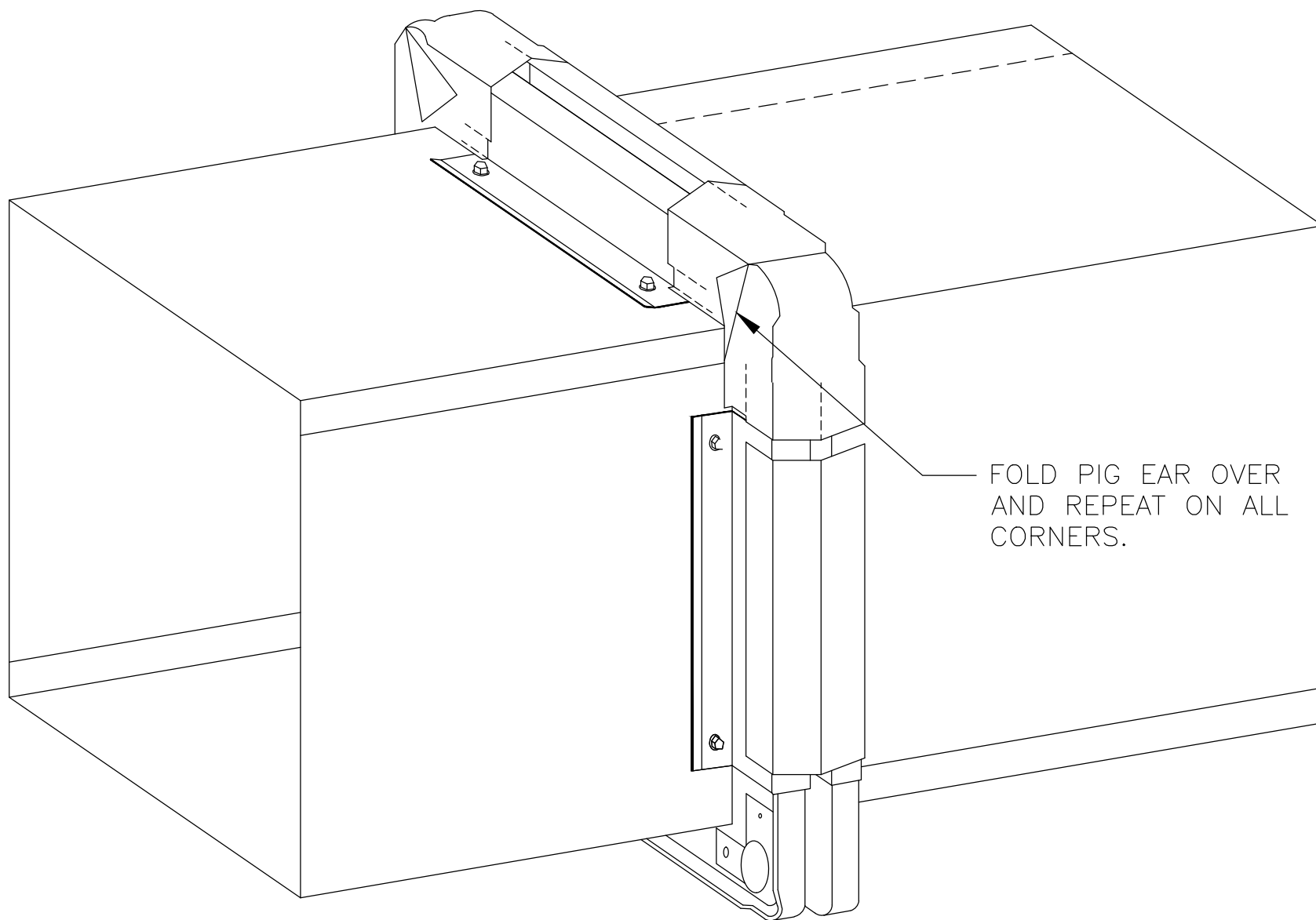


FO-1C.2

4-BOLT FLANGE

CARLISLE
HVAC PRODUCTS

© 2014 CARLISLE CORPORATION



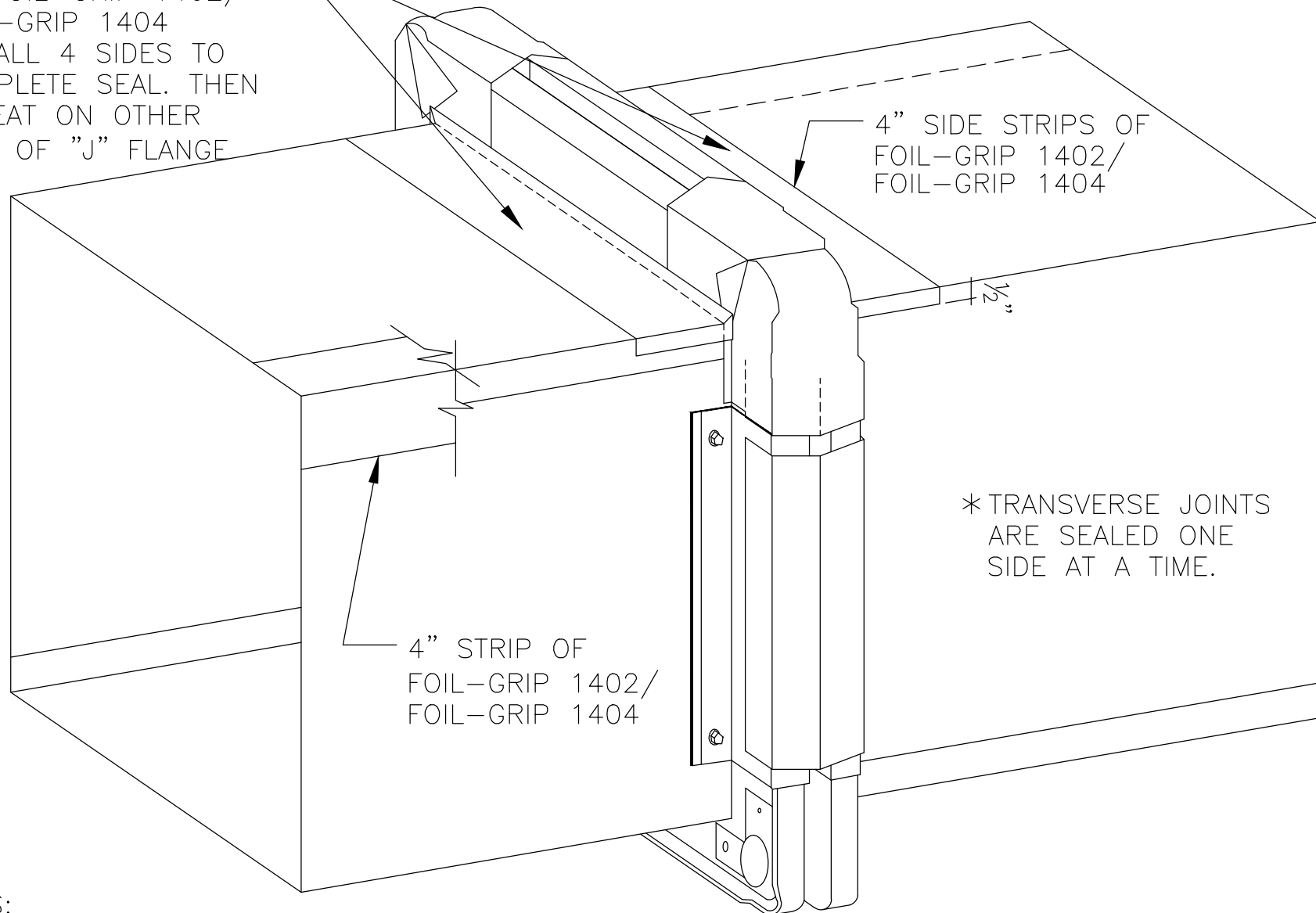
FO-1C.3

4-BOLT FLANGE

CARLISLE
HVAC PRODUCTS

© 2014 CARLISLE CORPORATION

PLACE 4" STRIPS
OF FOIL-GRIP 1402/
FOIL-GRIP 1404
ON ALL 4 SIDES TO
COMPLETE SEAL. THEN
REPEAT ON OTHER
SIDE OF "J" FLANGE



NOTES:

1. CUT ADJACENT STRIPS OF FG-1402/ FG-1404 AND SPLICE A MINIMUM OF $\frac{1}{2}$ " ONTO THE FG-1402/ FG-1404 COVER STRIPS.
2. USE THE SQUEEGEE TO ELIMINATE WRINKLES AND SEAL THE FG-1402/ FG1404 TO THE DUCTWORK.
3. COMPLETE USING 2 SEPARATE PIECES OF FG-1402/ FG-1404 FOR EACH SIDE.

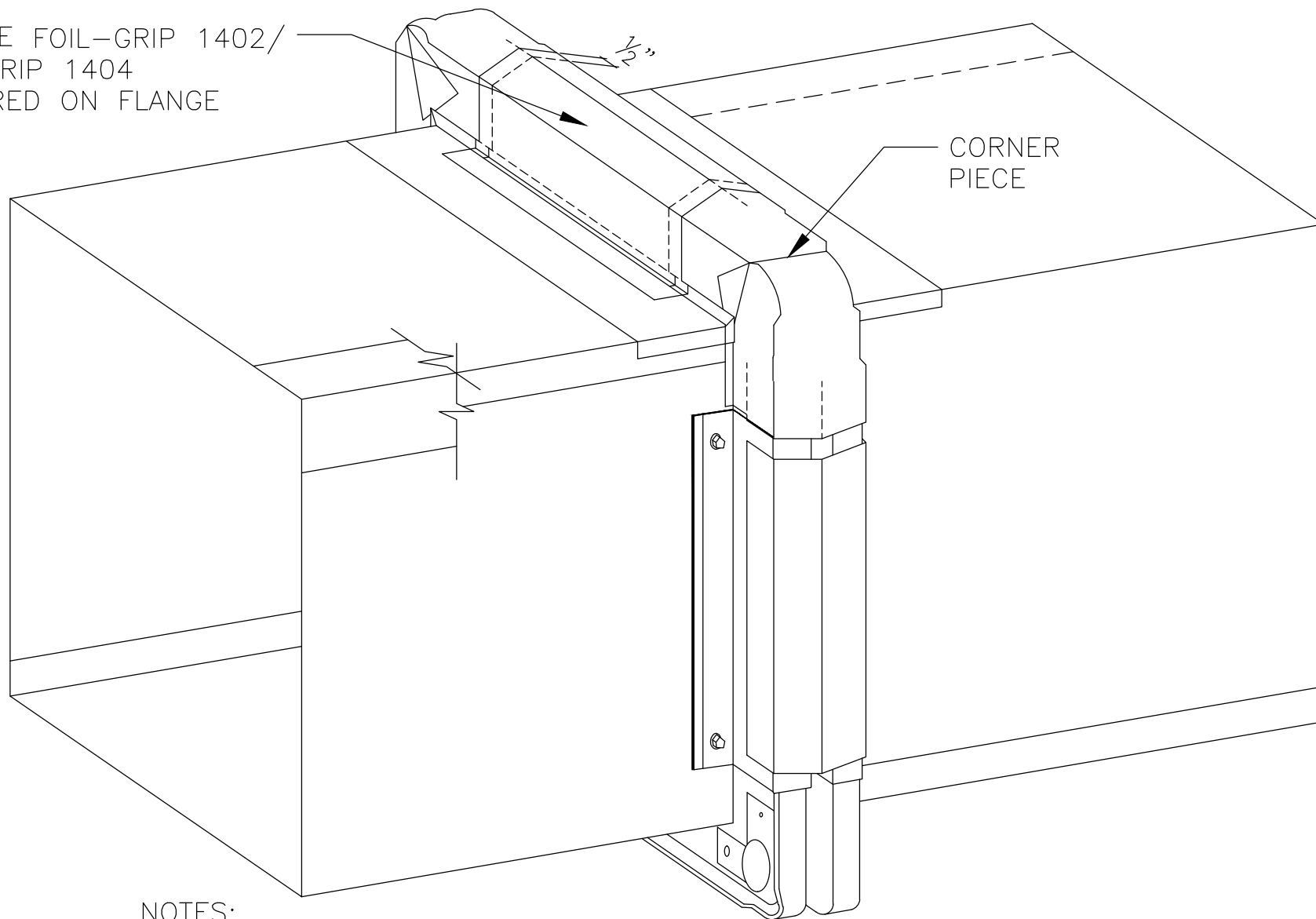
FO-1C.4

4-BOLT FLANGE

CARLISLE
HVAC PRODUCTS

© 2014 CARLISLE CORPORATION

4" WIDE FOIL-GRIP 1402/
FOIL-GRIP 1404
CENTERED ON FLANGE



NOTES:

1. CUT AND CENTER 4" WIDE COVER STRIP OF FG-1402/ FG-1404 OVER FLANGE.
2. SPLICE FG-1402/ FG-1404 COVER STRIP A MINIMUM OF $\frac{1}{2}$ " ONTO CORNER PIECES.
3. CONTOUR THE COVER STRIP USING POSITIVE PRESSURE TO CONFORM TO FLANGE.
4. COMPLETE ALL 4 SIDES WITH 4 DIFFERENT PIECES.

FO-1C.5

4-BOLT FLANGE

CARLISLE
HVAC PRODUCTS

© 2014 CARLISLE CORPORATION