

NOTE:

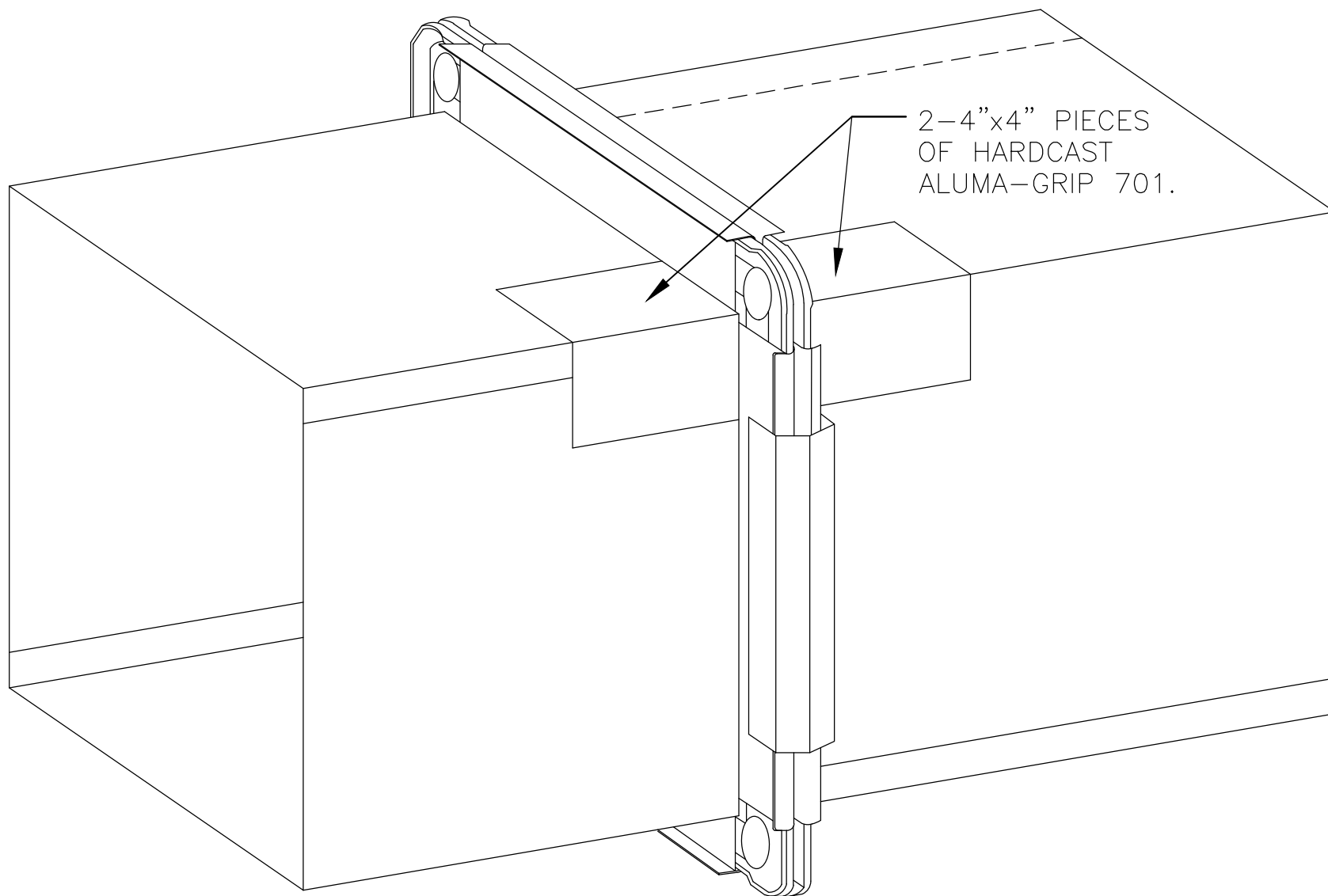
ON EXISTING DUCTWORK IT IS SUGGESTED TO TEST THE ADHESION OF THE ROLLED SEALANT PRIOR TO PERFORMING THE SEALING WORK. FOR OLDER DUCTWORK THE INSTALLER CAN USE AN ADHESIVE TO PRIME THE SURFACE FOR ROLLED SEALANT APPLICATION.

FO-2A.1

TDC/TDF FLANGE

CARLISLE
HVAC PRODUCTS

© 2017 CARLISLE CORPORATION

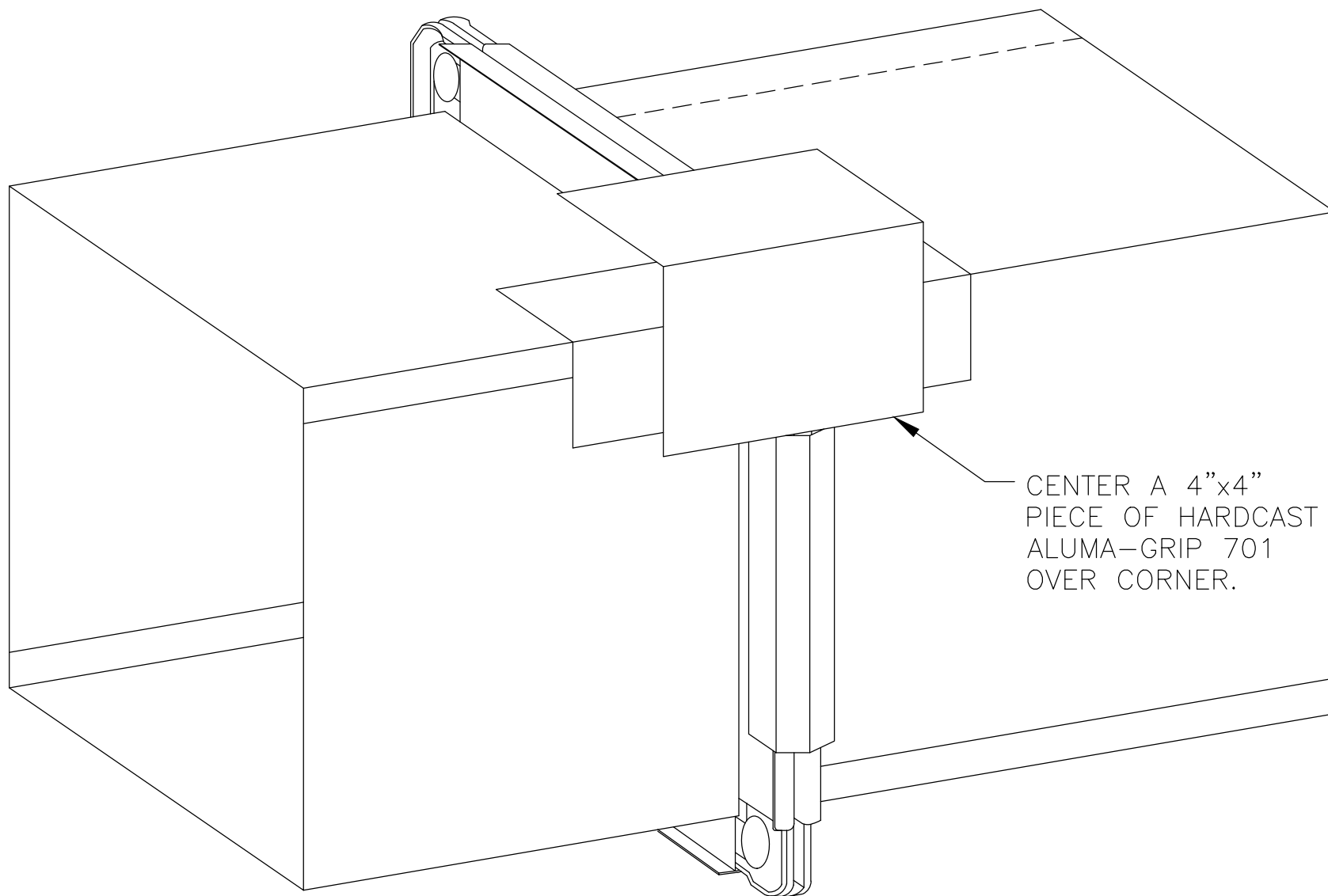


FO-2A.2

TDC/TDF FLANGE

CARLISLE
HVAC PRODUCTS

© 2017 CARLISLE CORPORATION

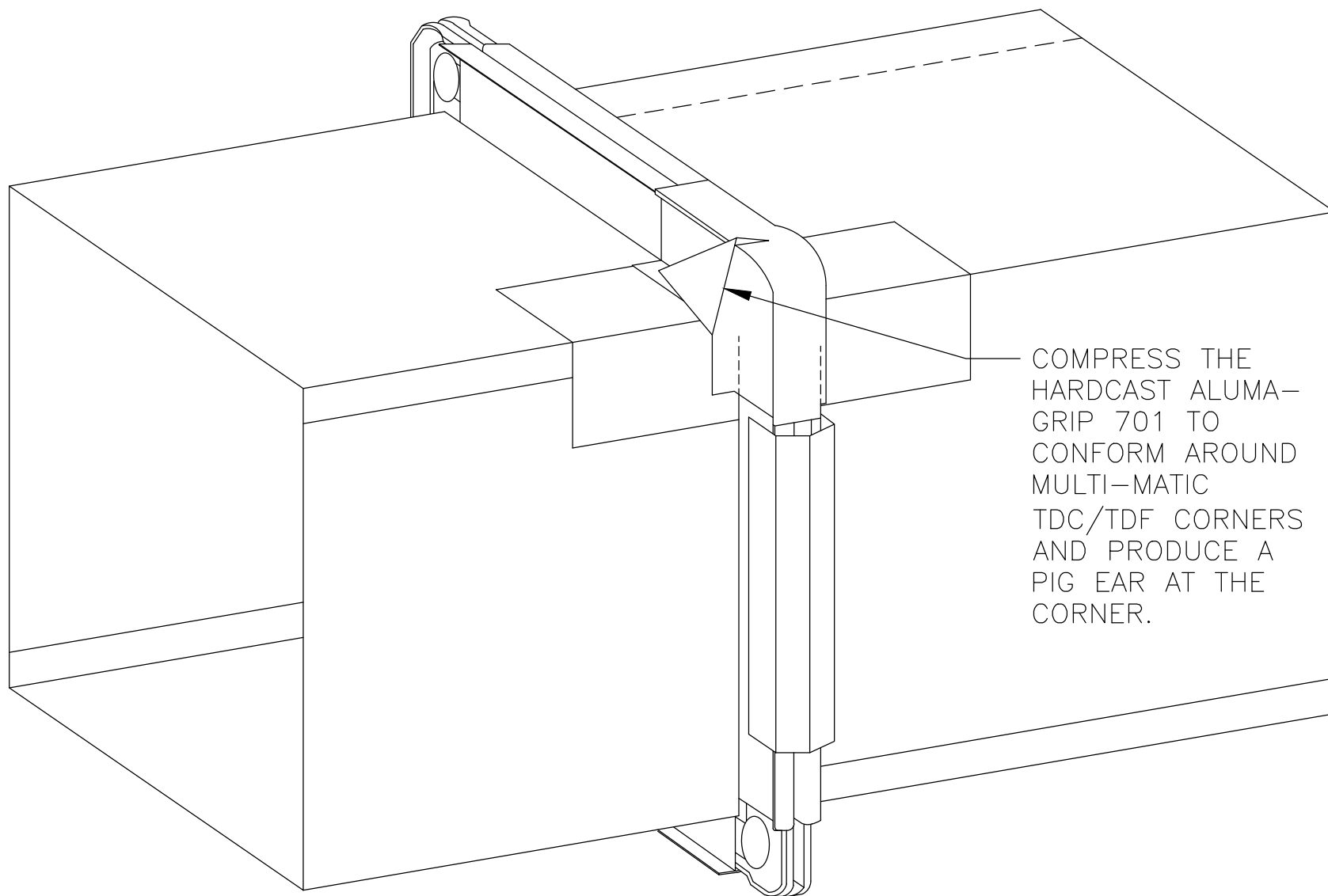


FO-2C.1

TDC/TDF FLANGE

CARLISLE
HVAC PRODUCTS

© 2017 CARLISLE CORPORATION

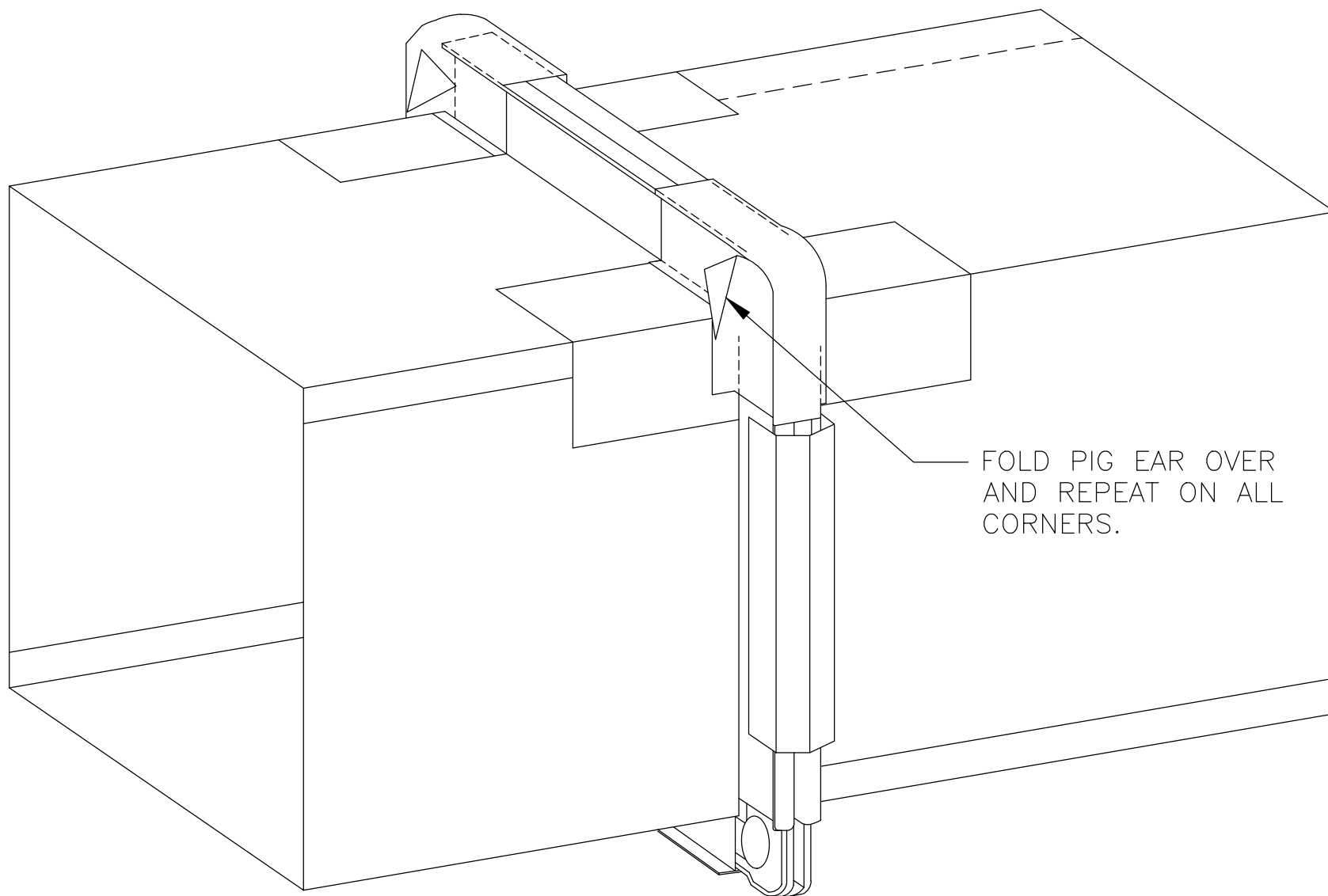


FO-2C.2

TDC/TDF FLANGE

CARLISLE
HVAC PRODUCTS

© 2017 CARLISLE CORPORATION



FOLD PIG EAR OVER
AND REPEAT ON ALL
CORNERS.

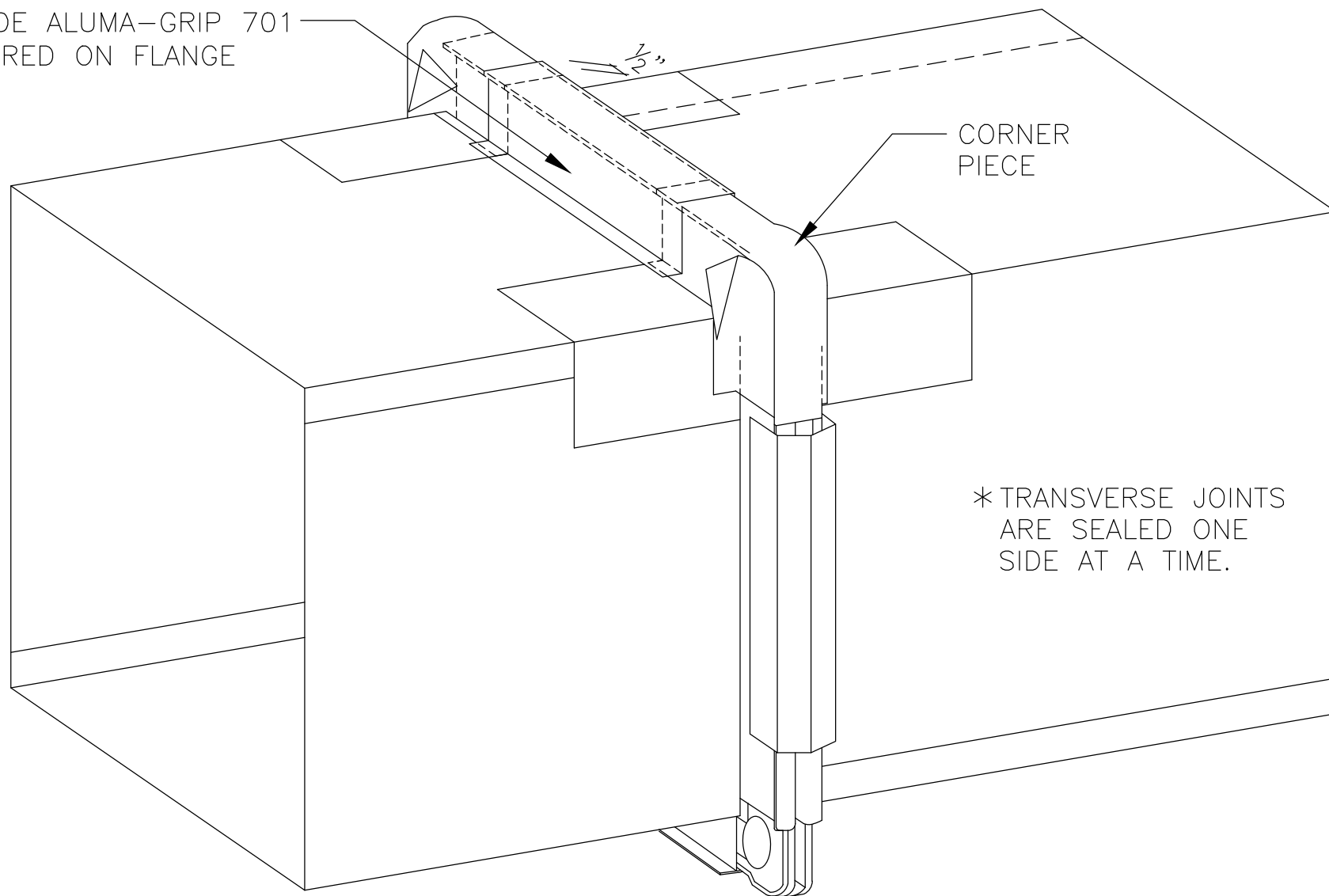
FO-2C.3

TDC/TDF FLANGE

CARLISLE
HVAC PRODUCTS

© 2017 CARLISLE CORPORATION

4" WIDE ALUMA-GRIP 701
CENTERED ON FLANGE

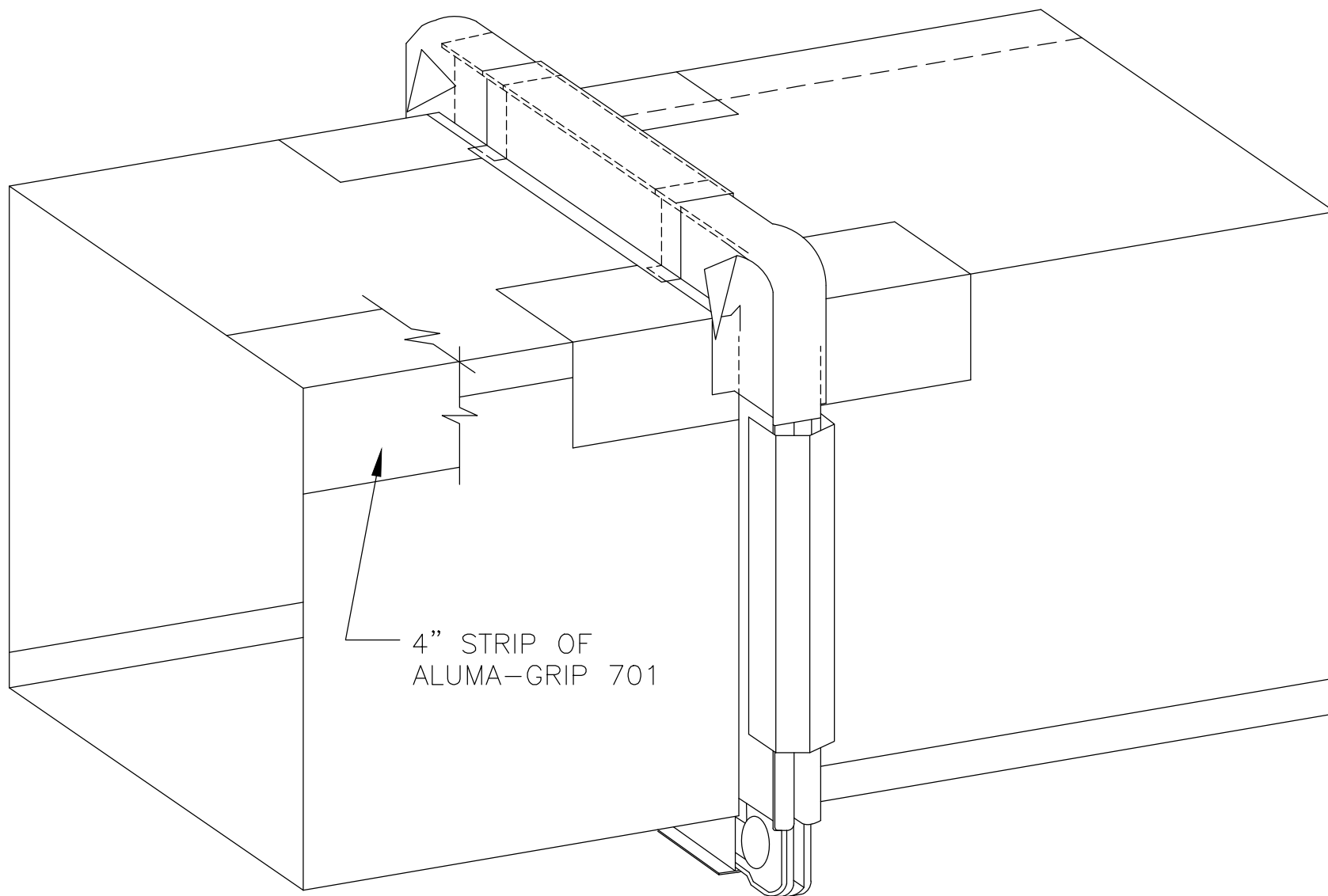


FO-2C.4

TDC/TDF FLANGE

CARLISLE
HVAC PRODUCTS

© 2017 CARLISLE CORPORATION



FO-2C.5

TDC/TDF FLANGE

CARLISLE
HVAC PRODUCTS

© 2017 CARLISLE CORPORATION