

BRONZE FLANGED BUSHING

Bronze Flanged Bushing's are made to Oilite self-lubricated specifications with high temperature oil and are created to press fit into a $\frac{5}{16}$ " drilled or punched hole.

PART #	PRODUCT DESCRIPTION
--------	---------------------

307934	1 Case w/ (100) Bushings
--------	--------------------------

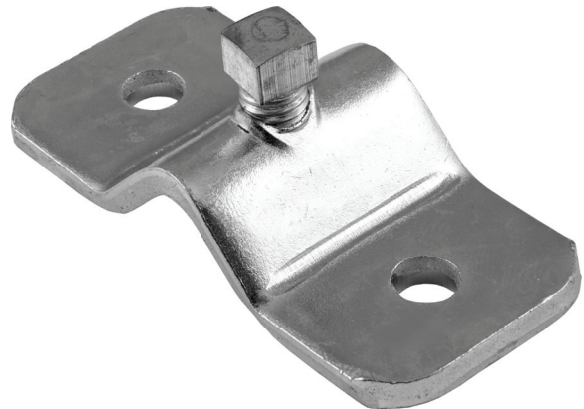


STRAP & SET SCREWS

Strap & Set Screws, often taken for granted, are precision stamped from 10 gauge cold-rolled steel and are tapped $\frac{1}{4}$ "-28 to a Class 2 fit. Set screws feature a square or socket head cup point that is hardened and zinc-plated.

PART #	PRODUCT DESCRIPTION
--------	---------------------

307930	1 Case w/ (100) Set Screws (Square Head)
--------	--



PART #	PRODUCT DESCRIPTION
--------	---------------------

307954	1 Case w/ (100) Set Screws (Hex Head)
--------	---------------------------------------

