

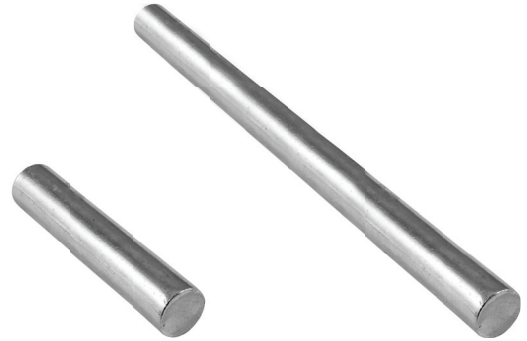
BEARING PINS

DynAir's Bearing Pins are cut from C-1012/1018 bright drawn steel wire and are zinc plated.

PART #	PRODUCT DESCRIPTION
--------	---------------------

307932	1 Case w/ (100) ½" x 2-½" Bearing Pins
--------	--

307955	1 Case w/ (100) ½" x 6" Bearing Pins
--------	--------------------------------------



ADAPTER BEARING PINS

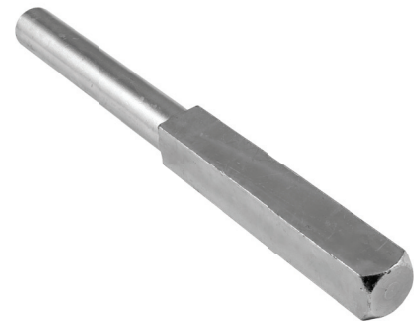
DynAir's Adapter Bearing Pin is made with zinc plated steel and used for control arms.

PART #	PRODUCT DESCRIPTION
--------	---------------------

307957	1 Case w/ (50) ½" x 6" Square to Round Adapter Bearing Pins
--------	---

PART #	PRODUCT DESCRIPTION
--------	---------------------

307959	1 Case w/ (50) ½" to 7/16" Slide Bearing Pins
--------	---



BLADE END

PART #	PRODUCT DESCRIPTION
--------	---------------------

307960	(1) 2" x 100' Roll
--------	--------------------

